



Azuga Asset Tracker Installation Guide (GL502)



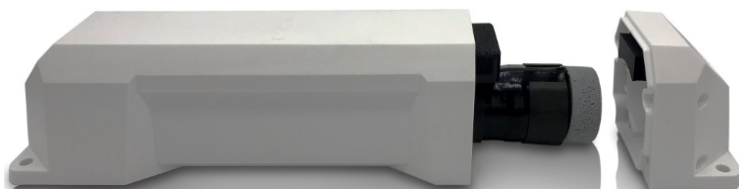
Overview on Asset Tracker GL502	2
What's in the box?	2
Installation Steps	3
Setting up asset tracking on Azuga Fleet	4

Overview on Asset Tracker GL502

The Asset tracker GL502 is a product specifically designed for container tracking, trailer tracking and asset tracking. Its ruggedized IP68 waterproof design ensures the product remains reliable when installed in harsh environments.

It comes with a 57000 mAh ultra-high capacity battery that supports up to 3 years standby time ideal for long deployments on non-powered assets.

What's in the box?



- GL502 Asset Tracker



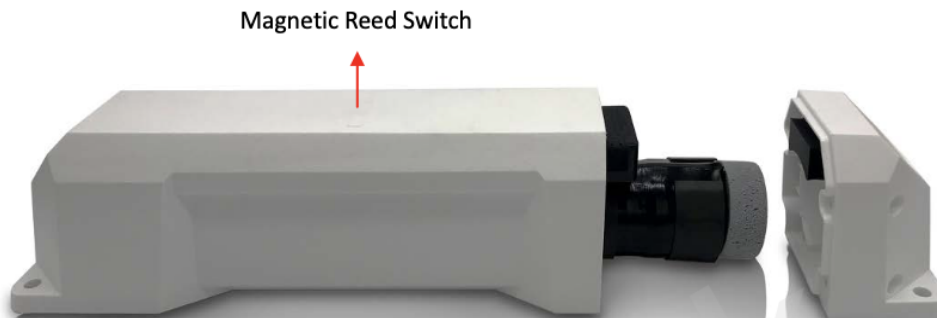
- Installation guide



- Magnetic mount

Installation Steps

1. To power on the device, use a magnet to approach the magnetic reed switch. The reed switch detects the presence of magnetic fields and defaults to an open position and powers on the asset tracker.



2. Determine an appropriate location on the asset to mount the device. Ensure that the asset tracker is placed with the top surface facing towards the open sky.



3. Once the device is activated, you can navigate to the Admin section on the Azuga UI to confirm the status. The status of the device can be viewed under the **Activation status** column under **ADMIN >> Devices >> Activation Date**

Activated Asset Tracker with date and time of activation

Non-activated Asset Tracker

CARRIER ID	IMEI	VEHICLE PROTOCOL	PHONE NUMBER	VENDOR NAME	CARRIER	PRODUCT CODE	DEVICE DESCRIPTION	FIRMWARE VERSION	CONFIG VERSION	ACTIVATION DATE	LAST CONTACT
3278369835155	015425000048498			Queclink	JASPER AT&T	QL-GL502-21				Not activated	Not activated
3278336657385	015425000025728			Queclink	JASPER AT&T	QL-GL502-21				Sep-25-2019 11:57 AM EDT	Mar-31-2021 11:12 AM EDT
3278215675391	015425000028169			Queclink	JASPER AT&T	QL-GL502-21				Not activated	Not activated
3278369841369	015425000039695			Queclink	JASPER AT&T	QL-GL502-21				May-19-2020 10:23 AM EDT	May-10-2021 11:00 AM EDT
3278336657591	015425000049033			Queclink	JASPER AT&T	QL-GL502-21				Not activated	Not activated
3278369815603	015425000026593			Queclink	JASPER AT&T	QL-GL502-21				Not activated	Not activated

Setting up asset tracking on Azuga Fleet

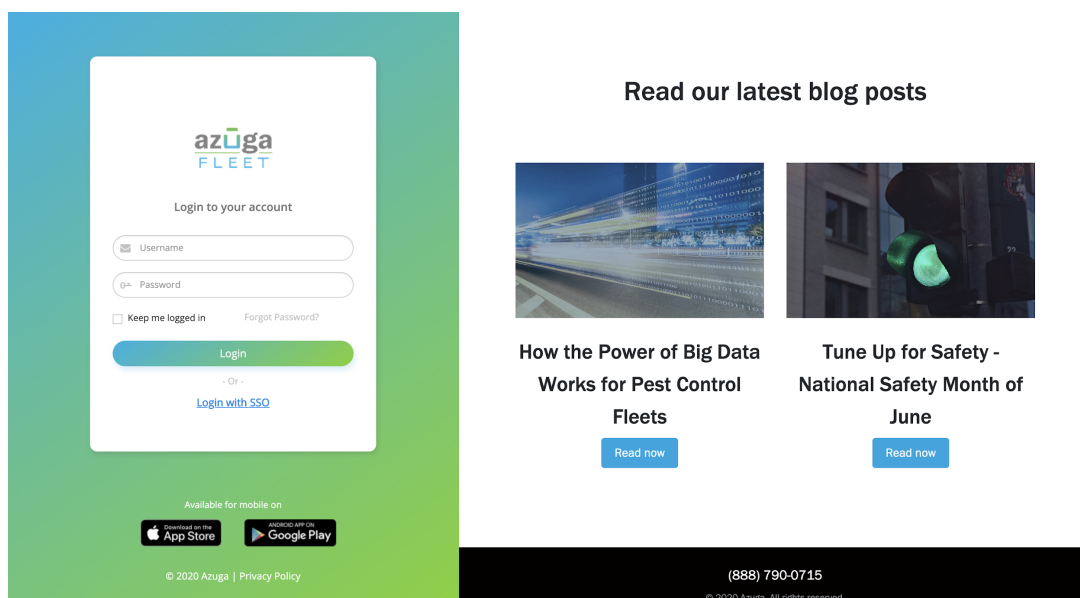
The Azuga Fleet web application allows you to set up, track and manage your assets. To start tracking, you need to assign the tracking devices to your assets. The steps to do this are listed below:

1. Note down the **IMEI** of the asset tracker device (the IMEI can be found printed on the label on the side of the device). Identify which asset this device will be installed into and give it a 'friendly name'. For example, 'Yard generator'. Note this down. Please keep these asset names short.

Note - Ensure this step is repeated for all devices that you have with you.



2. Log into the Azuga [Fleet web application](#) using your credentials.



Note - It is recommended that you change your password the first time you log into Azuga portal.

- Click here [How to change password](#) to learn more about changing the password.
- In case you forgot your password, Azuga lets you reset your password. Click here [Reset Password](#).

3. Once you login, navigate to the **Assets** page under the **Admin** tab,
4. Type the **IMEI** number of the device you noted down. You will notice that the asset name is the same as the device serial number. Azuga does this by default when the devices are initially tested.

- Click the **pencil icon** corresponding to the asset you wish to edit.

Customer: Azuga Admin: Test Azuga Customer ID: 3249

ADD ASSET This page enables you to name your assets and the same gets displayed on the map. You could also define asset types and make, model & year of your assets.

Search: on: All

	ASSET ID	TYPE	DEVICE SERIAL NUMBER	GROUP	MAKE	MODEL	YEAR	TAG
	40005901	Generator	5356644545	Default Group	Honda	2504 S	2012	Batch A01

- Update the **form** with appropriate details. Click the field you wish to edit and add/modify/remove text.

Change the asset name and give it a 'friendly name' (e.g. 'Generator'). This name needs to be unique. You cannot have two assets with the same name. Also, fill in the mandatory fields (marked with a *)

Cancel This page enables you to name your assets and the same gets displayed on the map. You could also define asset types and make, model & year of your assets.

Asset ID *

Type *

Make

Model

Year

License Plate

Asset Identification

Group *

Device *

Last Service Maintenance

Next Service Maintenance

Initial Engine Hours hrs mins

Current Engine Hours hrs mins

Map Icon *

Background Color

Text Color

Icon

Sensors *

- Click **Update Asset**. Repeat these steps for the remaining assets. Note that the asset names need to be unique.

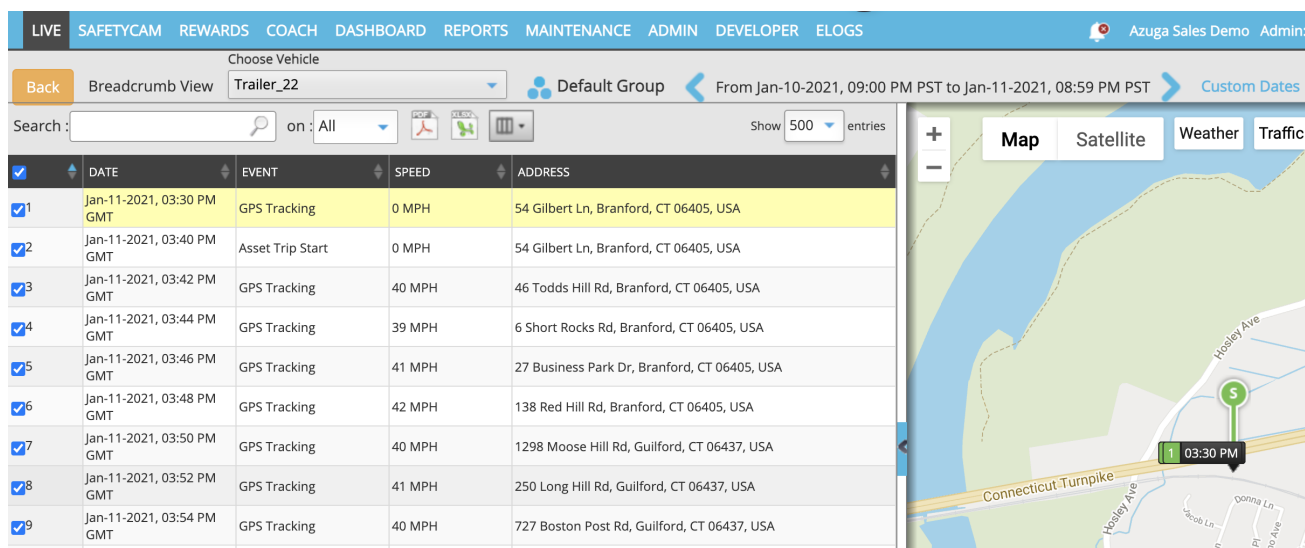
Where are my assets located?

Once the Asset tracker is successfully activated and some movement is detected, wait for 5-10 minutes and you will be able to view the events from the asset tracker on the Live Page.

The Live page on the Azuga website lets you track your assets in real time. It gives you the latest snapshot of all the assets present in your account. It provides you with details such as the current location, last activity reported to the server, and speed. You can also find the current location of an asset by looking at the map.

Note: In the Live data table, an entry with the trailer icon  represents an asset.

Click the name of the asset to get the breadcrumb trail of the asset's movement.



The screenshot displays the Azuga Live page interface. At the top, there is a navigation bar with tabs: LIVE, SAFETYCAM, REWARDS, COACH, DASHBOARD, REPORTS, MAINTENANCE, ADMIN, DEVELOPER, and ELOGS. The 'LIVE' tab is active. Below the navigation bar, there is a header section with a 'Choose Vehicle' dropdown menu set to 'Trailer_22', a 'Default Group' button, and a date range selector showing 'From Jan-10-2021, 09:00 PM PST to Jan-11-2021, 08:59 PM PST'. A 'Custom Dates' link is also present. Below the header, there is a search bar and a 'Show 500 entries' dropdown. The main content area features a table with columns: DATE, EVENT, SPEED, and ADDRESS. The table contains 9 rows of data, each with a checkbox in the first column. To the right of the table, there is a map view with tabs for Map, Satellite, Weather, and Traffic. The map shows a location in Branford, CT, with a green pin and a label '1 03:30 PM'.

	DATE	EVENT	SPEED	ADDRESS
<input checked="" type="checkbox"/>	Jan-11-2021, 03:30 PM GMT	GPS Tracking	0 MPH	54 Gilbert Ln, Branford, CT 06405, USA
<input checked="" type="checkbox"/>	Jan-11-2021, 03:40 PM GMT	Asset Trip Start	0 MPH	54 Gilbert Ln, Branford, CT 06405, USA
<input checked="" type="checkbox"/>	Jan-11-2021, 03:42 PM GMT	GPS Tracking	40 MPH	46 Todds Hill Rd, Branford, CT 06405, USA
<input checked="" type="checkbox"/>	Jan-11-2021, 03:44 PM GMT	GPS Tracking	39 MPH	6 Short Rocks Rd, Branford, CT 06405, USA
<input checked="" type="checkbox"/>	Jan-11-2021, 03:46 PM GMT	GPS Tracking	41 MPH	27 Business Park Dr, Branford, CT 06405, USA
<input checked="" type="checkbox"/>	Jan-11-2021, 03:48 PM GMT	GPS Tracking	42 MPH	138 Red Hill Rd, Branford, CT 06405, USA
<input checked="" type="checkbox"/>	Jan-11-2021, 03:50 PM GMT	GPS Tracking	40 MPH	1298 Moose Hill Rd, Guilford, CT 06437, USA
<input checked="" type="checkbox"/>	Jan-11-2021, 03:52 PM GMT	GPS Tracking	41 MPH	250 Long Hill Rd, Guilford, CT 06437, USA
<input checked="" type="checkbox"/>	Jan-11-2021, 03:54 PM GMT	GPS Tracking	40 MPH	727 Boston Post Rd, Guilford, CT 06437, USA